

## Supported by

Vereinigung zur Förderung des  
Instituts für Elektrowärme e.V., Hannover

Center of Processes' Analysis and Research, Ltd., Riga

# 8<sup>th</sup> International Scientific Colloquium **Modelling for Materials Processing** *Riga, September 21-22, 2017*

## Announcement and Call for Papers

### Background of the Colloquium

In tradition of the international scientific colloquiums *Modelling for Materials Processing* in Riga in 1999, 2001, 2007 and 2010, and *Modelling for Electromagnetic Processing* in Hanover 2003, 2008 and 2014 the University of Latvia is organising the next colloquium *Modelling for Materials Processing* in Riga in September 2017 together with the Institute of Electrotechnology of the Leibniz University of Hanover and other co-operation partners.

The results presented at the colloquium will cover recent numerical and experimental research activities in the field of industrial processing technologies for creating new and alternative materials, materials of highest quality and purity and new innovative products.

### Deadlines

Submission of abstracts:	March 31, 2017
Notification of acceptance:	April 30, 2017
Submission of papers:	June 30, 2017
Early-registration and payment:	July 15, 2017
Distribution of programs:	August 31, 2017

### Main topics

Papers on the numerical and physical modelling in the following branches are welcome:

- ≡ Processing of high quality metal alloys and non-metallic materials (oxides, glasses, powders, composites)
- ≡ Crystal growth of semi-conductive materials
- ≡ Production processes for new and innovative products
- ≡ EM stirring, casting, shaping, forming and levitation
- ≡ Burning, evaporation and condensations processes
- ≡ Energy efficiency and sustainability of technological equipment
- ≡ Space technologies and applications

### Time and Location

The colloquium will take place on September 21 and 22, 2017 at the Academic Centre for Natural Sciences of the University of Latvia, located on Jelgavas street 1 in Riga.

Riga, the capital of Latvia, situated on the coast of Baltic Sea, has more than 700 000 inhabitants and is the largest city in the Baltic countries. There are direct flight connections between Riga and many European cities.

The University of Latvia is the biggest classical university in the state with more than 15 thousands students. The Academic Centre is located near the city centre (20 minutes drive from airport, 15 minutes walk from old town) and is easily accessible by public transport.



© Foto: Toms Grinbergs, Latvijas Universitātes Mediju un mārketinga centrs



## International Scientific Committee

<b>E. Baake</b>	Leibniz University Hanover, Germany
<b>V. Bojarevics</b>	University of Greenwich, United Kingdom
<b>F. Dughiero</b>	University of Padua, Italy
<b>P. Dold</b>	Fraunhofer CSP, Germany
<b>V. Fireteanu</b>	Politehnica University of Bucharest, Romania
<b>A. Jakovics</b>	University of Latvia, Latvia
<b>B. Nacke</b>	Leibniz University Hanover, Germany
<b>A. Thess</b>	German Aerospace Center (DLR), Germany
<b>V. Timofejev</b>	Siberian Federal University, Russian Federation
<b>J. Virbulis</b>	University of Latvia, Latvia

## Local Organizing Committee

**A. Jakovičs** (Chairman), **J. Virbulis**, **M. Ščepanskis**  
Mrs. **I. Suija**, Secretary

## Address

Laboratory for Mathematical Modelling of  
Environmental and Technological Processes  
University of Latvia  
Zellu str. 23, Rīga, LV-1002, Latvia  
Tel.: +371 67 033 780, Fax: +371 67 033 781  
E-mail: MMP2017@lu.lv

## Further Information and Registration

Further information



[www.modlab.lv/mmp2017](http://www.modlab.lv/mmp2017)

Online registration



[easychair.org/conferences/?conf=mmp2017](http://easychair.org/conferences/?conf=mmp2017)

## Participation Fee

The participation fee (early registration 420€, normal rate 490€, incl. 21% VAT) covers all information material of the colloquium, the proceedings and flash, dinner as well as coffee and refreshments during breaks. The payment is asked for as a remittance to the account of PAIC Ltd. with the keyword "MMP Colloquium":  
IBAN LV16 UNLA 0003 0174 6778 7  
SEB bank, SWIFT UNLALV2X

## Abstracts and Papers

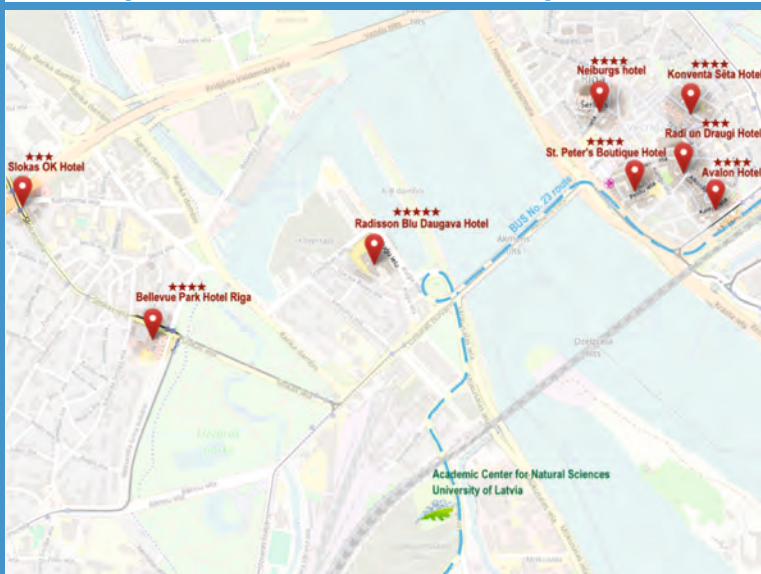
The official language of the Colloquium will be English.

Please send abstracts of up to 1500 letters (0.5 pages), describing the content of the paper and the authors using the on-line registration form.

The papers should not exceed 6 pages including figures and tables. They will be published in the proceedings of the Colloquium. Detailed information about text layout etc. will be provided together with the notification of acceptance.

All registered participants of the conference will be able to publish the paper in a peer-review journal without additional costs. The authors' can choose between a paper in an open access journal IOP Conference Series: Materials Science and Engineering and the publication in the special issue of the journal "Magnetohydrodynamics" (IF2015: 0.588). Only the papers, whose content addresses MHD issues, can be published in this journal.

## Colloquium venue and hotel map



## Additional Excursions

- The participants and their accompanying persons may
- ≡ visit the Faculty of Physics and Mathematics and get acquainted with the research done in mathematical modelling at the Department of Physics
  - ≡ participate in an Old Riga walking tour (2.5 hours; the evening of September 22)
  - ≡ participate in a one day excursion to the seaside town Jūrmala (on September 23; for additional fee)



Jūrmala